

DLPLUS Linked

Assembly Instructions



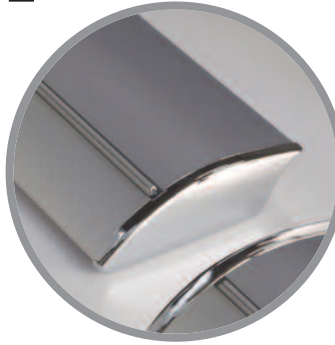
+44 (0) 844 335 3919

1



Remove your roll ups and bungee poles from their carry bags.

2



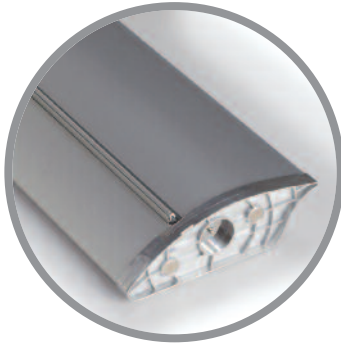
Place roll ups next to each other ensuring that they are in the correct order for your graphic display.

3



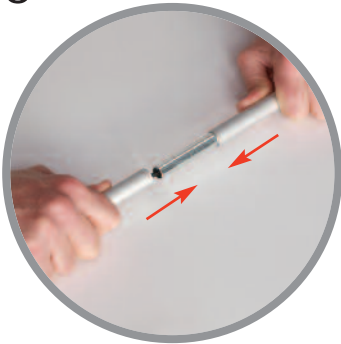
At adjacent ends of bases to be joined, invert base and detach end caps by removing thumbscrews.

4



Return bases to upright position and affix magnetic joining cap to one of the ends to be joined.

5



Take the bungee pole and allow all three sections to slide together.

6



Insert bottom of the pole into the pole plug in base, ensuring it is fully located.

7



Firmly hold and pull graphic rail up towards moulding at the top of the bungee pole.

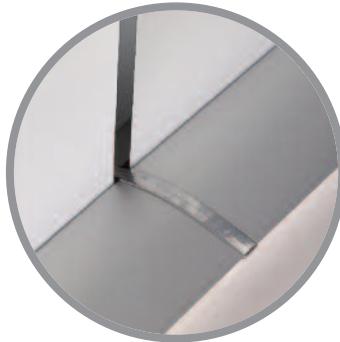
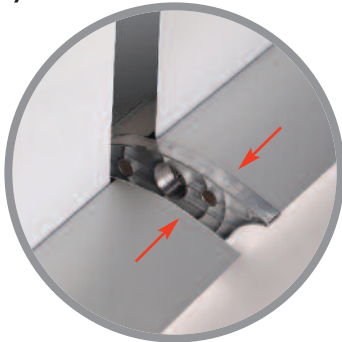
8



Align centre markings on graphic rail with moulding, angle rail to insert protruding edge of moulding into channel, and rotate back to vertical position to secure.

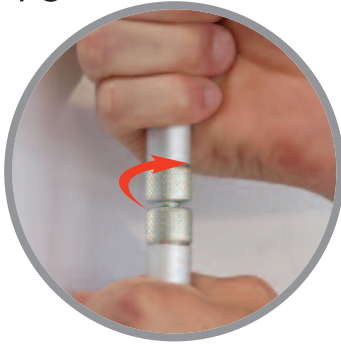
Repeat stages 5-8 for all other roll ups within the overall display.

9



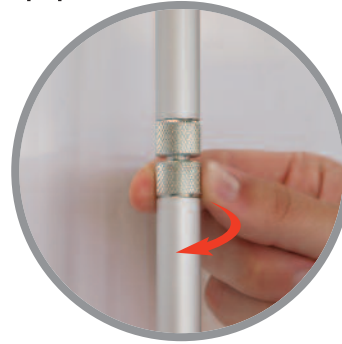
Link bases by aligning end plates with magnetic joining cap and pushing together until they are fully connected.

10



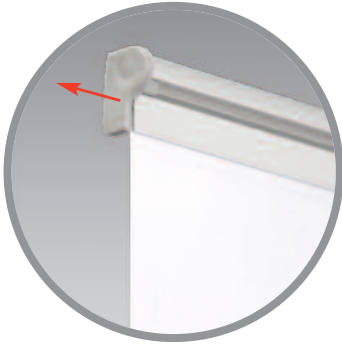
To align graphic rails if necessary, adjust the relative height of graphic panels by twisting the top section of the bungee pole anti-clockwise to lengthen it or clockwise to shorten it.

11



With the graphic rails satisfactorily aligned, secure each in place with a simple clockwise twist of the knurled locking nut.

12.1



12.2



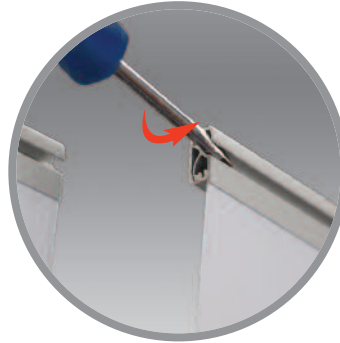
12.3



12.4



12.5



Remove adjacent end caps from graphic rails and slide joining rail piece in between (12.1, 12.2, 12.3).

NOTE: If you experience difficulty with sliding the joining rail piece into the ends of the graphic rails, please ensure the thumbscrews are fully unscrewed. If the problem persists, gently 'uncrimp' the ends of the graphic rails by twisting a flat-head screwdriver to open slightly. (12.4, 12.5)

13.1



13.2



Hold graphic rails and joining rail together and tighten both thumbscrews until secure. Repeat stages 12 and 13 for other linked systems, if applicable.

14



If necessary, adjust the feet in the underside of the base cassette to ensure graphics stand vertically.

